

April 2015

FIGURE A1-18

**REROUTE AT
SKP 551.0 - 551.4**

**ENBRIDGE PIPELINES INC.
LINE 3 REPLACEMENT
PROGRAM**

10427

- Station Kilometre Post
- Reroute Station Kilometre Post
- Line 3 Replacement Pipeline Route (Route Filed November 5, 2014)
- Line 3 Replacement Pipeline Reroute
- Construction Right-of-Way
- Extra Temporary Workspace
- Access Road/Shoofly
- Enbridge Property Extension
- Existing Enbridge Station/Terminal
- Highway
- Road
- Access/Resource Road
- Railway
- City/Town/Village

SCALE: 1:5,000

50 0 50 m

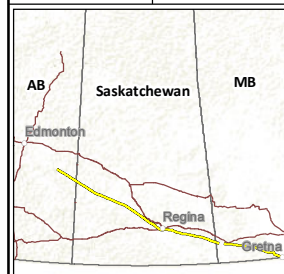
(All Locations Approximate)

tera A CH2M HILL Company

Enbridge Lambert Conformal Conic
Satellite Imagery: Enbridge Pipelines Inc. 2013; licensed by
Pictometry 2012; Roads: JHS Inc. 2015; Railway: NRCan 2012.

Although there is no reason to believe that there are any errors associated with the data used to generate this product or in the product itself, users of these data are advised that errors in the data may be present.

Mapped By: WL Checked By: CN





April 2015

FIGURE A1-19

**REROUTE AT
SKP 574.4 - 574.6**

**ENBRIDGE PIPELINES INC.
LINE 3 REPLACEMENT
PROGRAM**

10427

- Station Kilometre Post
- Reroute Station Kilometre Post
- Line 3 Replacement Pipeline Route (Route Filed November 5, 2014)
- Line 3 Replacement Pipeline Reroute
- Construction Right-of-Way
- Extra Temporary Workspace
- Access Road/Shoofly
- Enbridge Property Extension
- Existing Enbridge Station/Terminal
- Highway
- Road
- Access/Resource Road
- Railway
- City/Town/Village

SCALE: 1:5,000

50 0 50 m

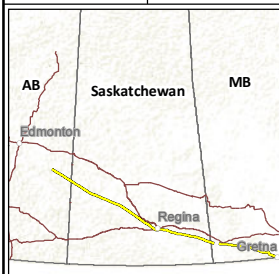
(All Locations Approximate)

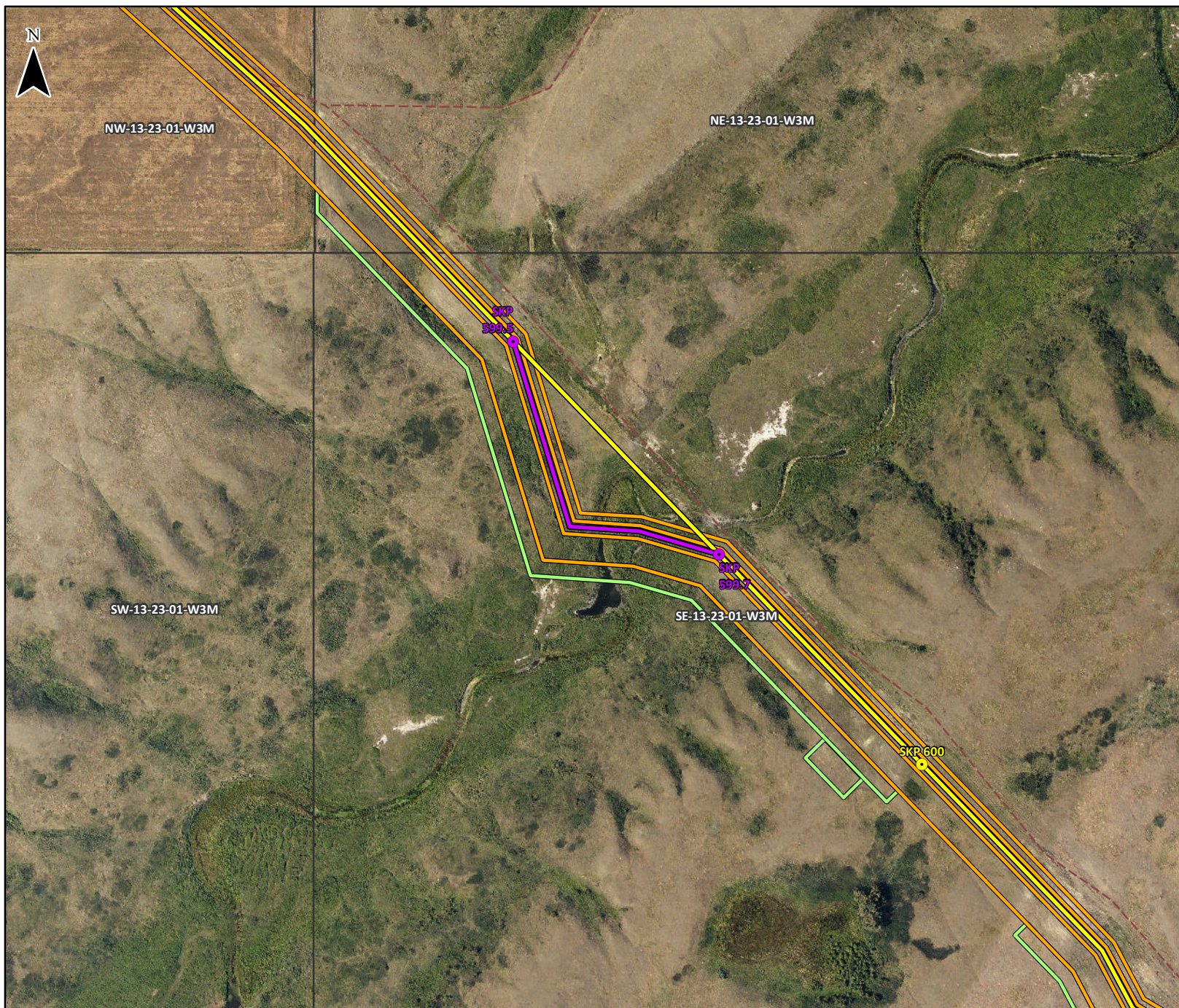


Enbridge Lambert Conformal Conic
Satellite Imagery: Enbridge Pipelines Inc. 2013; licensed by
Pictometry 2012; Roads: JHS Inc. 2015; Railway: NRCan 2012.

Although there is no reason to believe that there are any errors associated with the data used to generate this product or in the product itself, users of these data are advised that errors in the data may be present.

Mapped By: WL Checked By: CN





April 2015

FIGURE A1-20

**REROUTE AT
SKP 599.5 - 599.7**

**ENBRIDGE PIPELINES INC.
LINE 3 REPLACEMENT
PROGRAM**

10427

- Station Kilometre Post
- Reroute Station Kilometre Post
- Line 3 Replacement Pipeline Route (Route Filed November 5, 2014)
- Line 3 Replacement Pipeline Reroute
- Construction Right-of-Way
- Extra Temporary Workspace
- Access Road/Shoofly
- Enbridge Property Extension
- Existing Enbridge Station/Terminal
- Highway
- Road
- Access/Resource Road
- Railway
- City/Town/Village

SCALE: 1:5,000

50 0 50 m

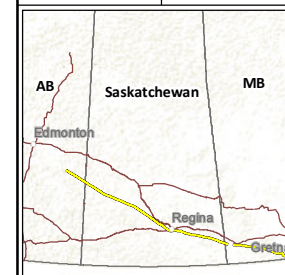
(All Locations Approximate)

tera A CH2M HILL Company

Enbridge Lambert Conformal Conic
Satellite Imagery: Enbridge Pipelines Inc. 2013; licensed by
Pictometry 2012; Roads: SHS Inc. 2015; Railway: NRCan 2012.

Although there is no reason to believe that there are any errors associated with the data used to generate this product or in the product itself, users of these data are advised that errors in the data may be present.

Mapped By: WL Checked By: CN



April 2015

FIGURE A1-21

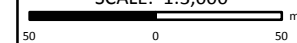
**REROUTE AT
SKP 603.5 - 603.7**

**ENBRIDGE PIPELINES INC.
LINE 3 REPLACEMENT
PROGRAM**

10427

- Station Kilometre Post
- Reroute Station Kilometre Post
- Line 3 Replacement Pipeline Route (Route Filed November 5, 2014)
- Line 3 Replacement Pipeline Reroute
- Construction Right-of-Way
- Extra Temporary Workspace
- Access Road/Shoofly
- Enbridge Property Extension
- Existing Enbridge Station/Terminal
- Highway
- Road
- Access/Resource Road
- Railway
- City/Town/Village

SCALE: 1:3,000



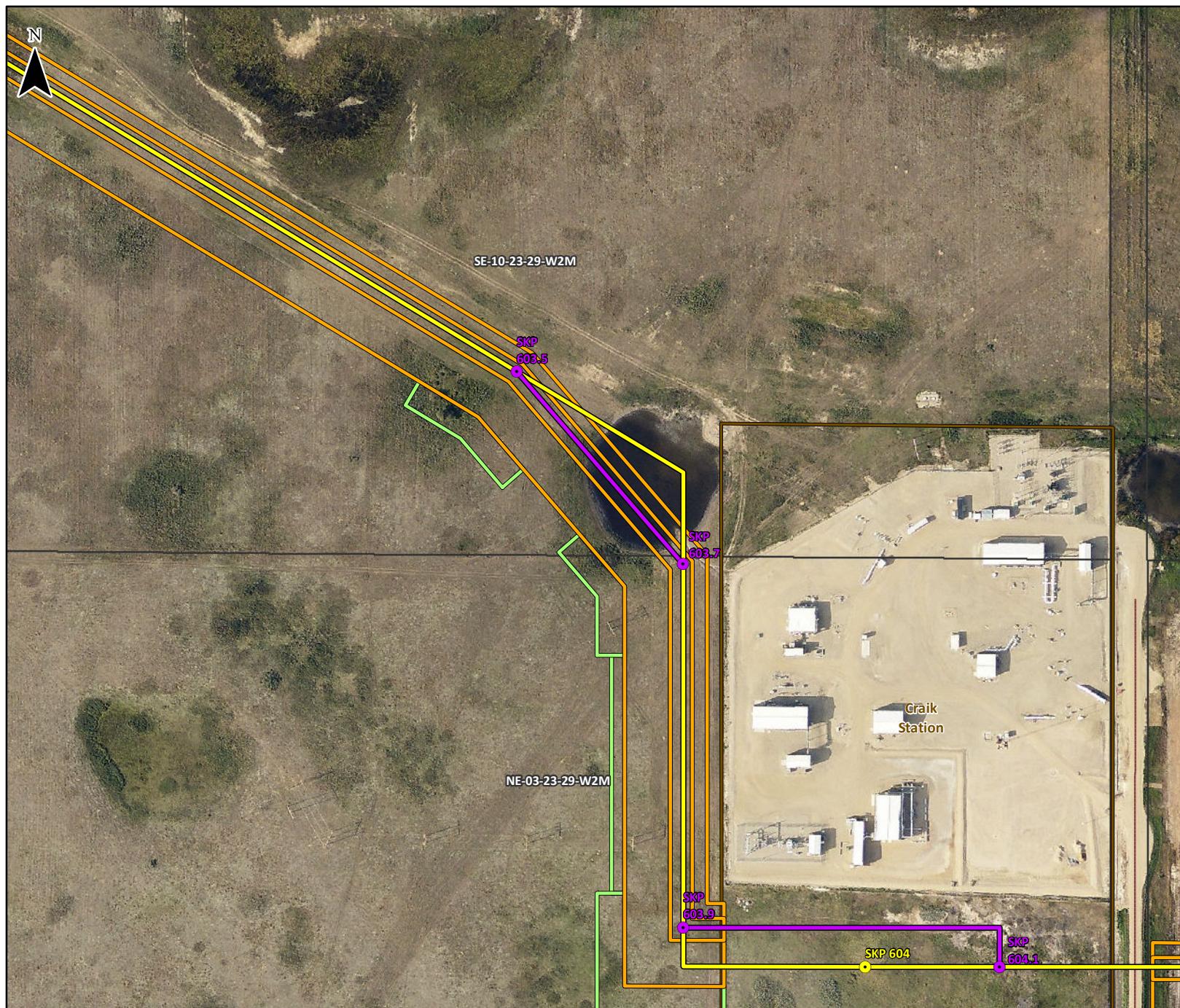
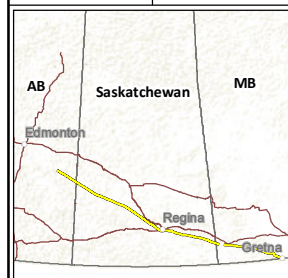
(All Locations Approximate)

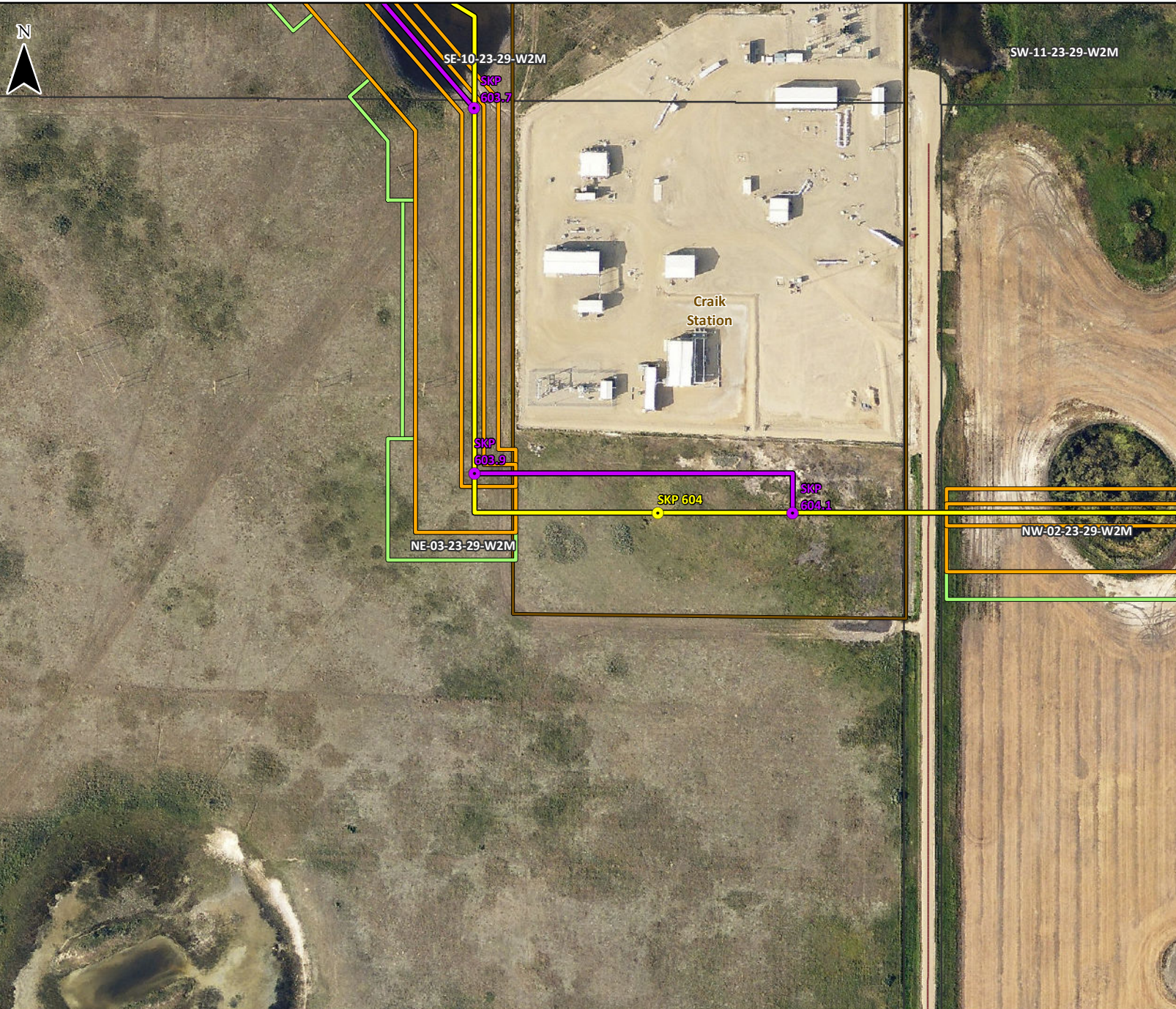


Enbridge Lambert Conformal Conic
Satellite Imagery: Enbridge Pipelines Inc. 2013; licensed by
Pictometry 2012; Roads: SHS Inc. 2015; Railway: NRCan 2012.

Although there is no reason to believe that there are any errors associated with the data used to generate this product or in the product itself, users of these data are advised that errors in the data may be present.

Mapped By: WL Checked By: CN





April 2015

FIGURE A1-22

**REROUTE AT
SKP 603.9 - 604.1**

**ENBRIDGE PIPELINES INC.
LINE 3 REPLACEMENT
PROGRAM**

10427

- Station Kilometre Post
- Reroute Station Kilometre Post
- Line 3 Replacement Pipeline Route (Route Filed November 5, 2014)
- Line 3 Replacement Pipeline Reroute
- Construction Right-of-Way
- Extra Temporary Workspace
- Access Road/Shoofly
- Enbridge Property Extension
- Existing Enbridge Station/Terminal
- X 892 Highway
- Road
- Access/Resource Road
- Railway
- City/Town/Village

SCALE: 1:3,000



(All Locations Approximate)





April 2015

FIGURE A1-23

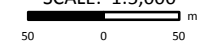
**REROUTE AT
SKP 626.0 - 626.2**

**ENBRIDGE PIPELINES INC.
LINE 3 REPLACEMENT
PROGRAM**

10427

- Station Kilometre Post
- Reroute Station Kilometre Post
- Line 3 Replacement Pipeline Route (Route Filed November 5, 2014)
- Line 3 Replacement Pipeline Reroute
- Construction Right-of-Way
- Extra Temporary Workspace
- Access Road/Shoofly
- Enbridge Property Extension
- Existing Enbridge Station/Terminal
- X 892 Highway
- Road
- Access/Resource Road
- Railway
- City/Town/Village

SCALE: 1:5,000



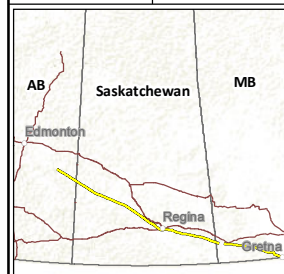
(All Locations Approximate)

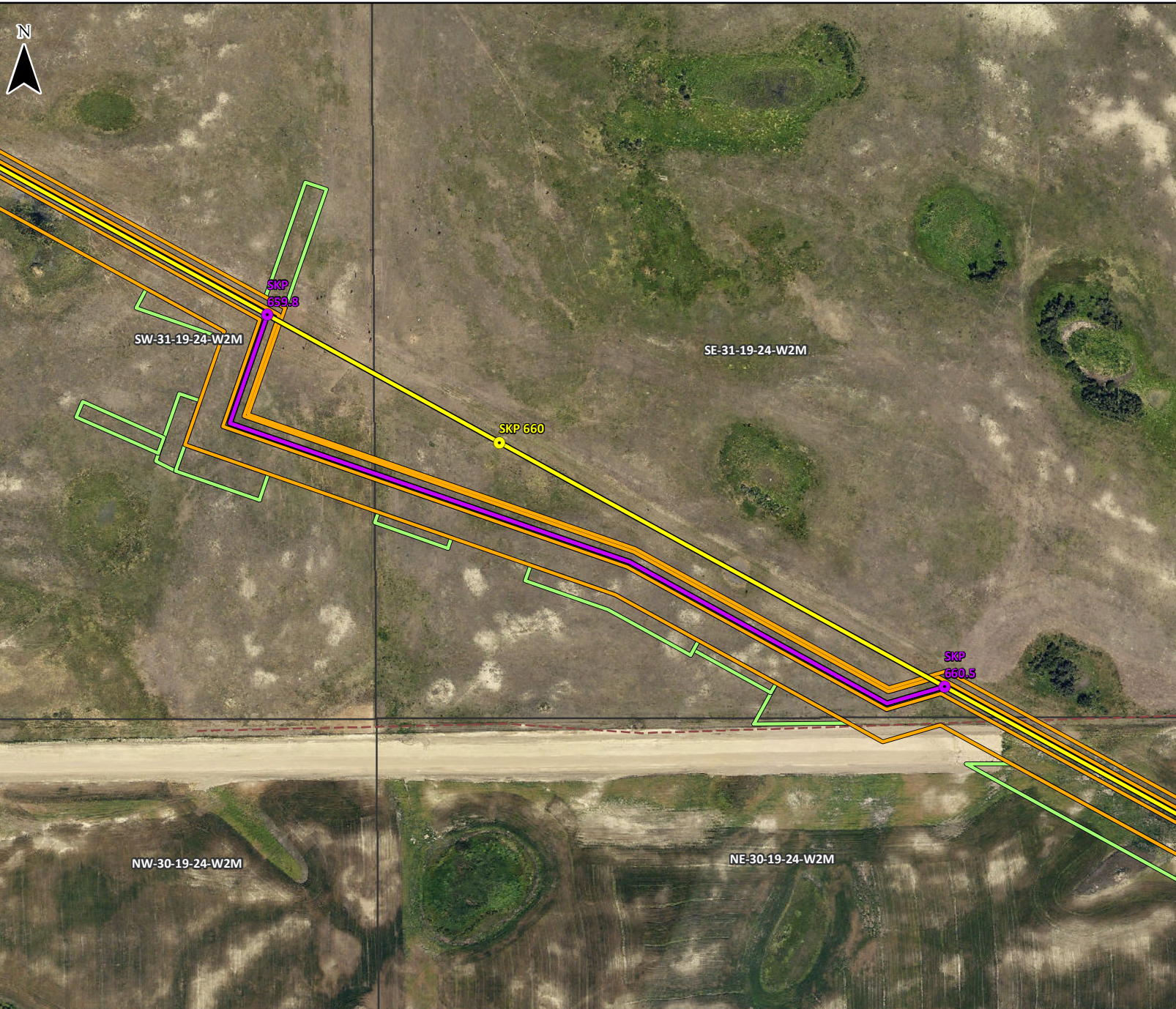
tera A CH2M HILL Company

Enbridge Lambert Conformal Conic
Satellite Imagery: Enbridge Pipelines Inc. 2013; licensed by
Pictometry 2012; Roads: JHS Inc. 2015; Railway: NRCan 2012.

Although there is no reason to believe that there are any errors associated with the data used to generate this product, or in the product itself, users of these data are advised that errors in the data may be present.

Mapped By: WL Checked By: CN





April 2015

FIGURE A1-24

**REROUTE AT
SKP 659.8 - 660.5**

**ENBRIDGE PIPELINES INC.
LINE 3 REPLACEMENT
PROGRAM**

10427

- Station Kilometre Post
- Reroute Station Kilometre Post
- Line 3 Replacement Pipeline Route (Route Filed November 5, 2014)
- Line 3 Replacement Pipeline Reroute
- Construction Right-of-Way
- Extra Temporary Workspace
- Access Road/Shoofly
- Enbridge Property Extension
- Existing Enbridge Station/Terminal
- Highway
- Road
- Access/Resource Road
- Railway
- City/Town/Village

SCALE: 1:5,000

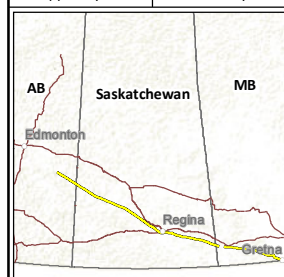
50 0 50 m
(All Locations Approximate)

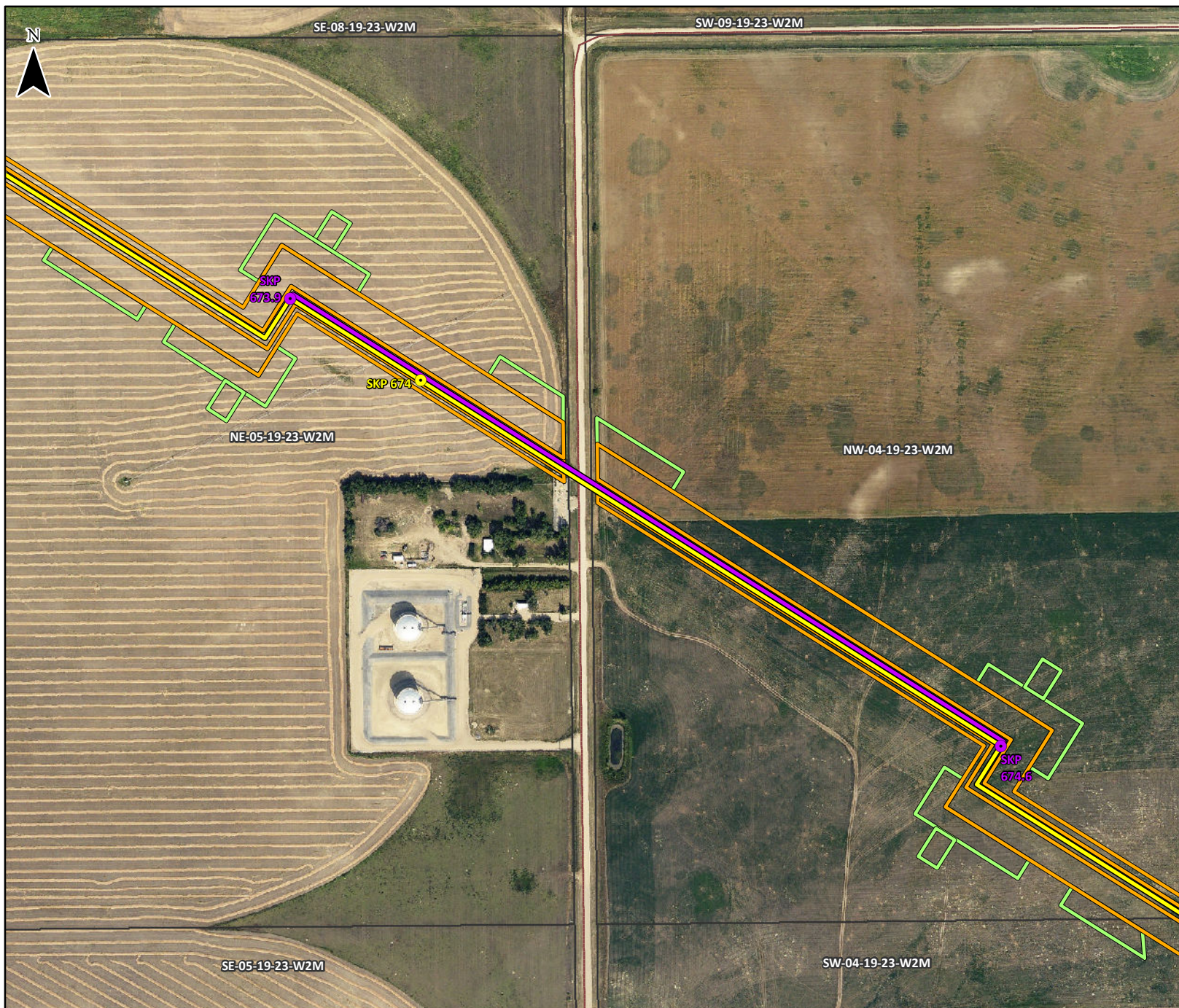


Enbridge Lambert Conformal Conic
Satellite Imagery: Enbridge Pipelines Inc. 2013; licensed by
Pictometry 2012; Roads: JHS Inc. 2015; Railway: NRCan 2012.

Although there is no reason to believe that there are any errors associated with the data used to generate this product or in the product itself, users of these data are advised that errors in the data may be present.

Mapped By: WL Checked By: CN





April 2015

FIGURE A1-25

**REROUTE AT
SKP 673.9 - 674.6**

ENBRIDGE PIPELINES INC. LINE 3 REPLACEMENT PROGRAM

10427

- Station Kilometre Post
- Reroute Station Kilometre Post
- Line 3 Replacement Pipeline Route (Route Filed November 5, 2014)
- Line 3 Replacement Pipeline Reroute
- Construction Right-of-Way
- Extra Temporary Workspace
- Access Road/Shoofly
- Enbridge Property Extension
- Existing Enbridge Station/Terminal
- Highway
- Road
- Access/Resource Road
- Railway
- City/Town/Village

SCALE: 1:5,000

50 0 50 m

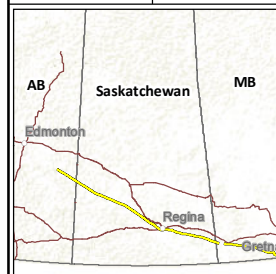
(All Locations Approximate)



Enbridge Lambert Conformal Conic
Satellite Imagery: Enbridge Pipelines Inc. 2013; licensed by
Pictometry 2012; Roads: JHS Inc. 2015; Railway: NRCan 2012.

Although there is no reason to believe that there are any errors associated with the data used to generate this product or in the product itself, users of these data are advised that errors in the data may be present.

Mapped By: WL Checked By: CN



April 2015

FIGURE A1-26

**REROUTE AT
SKP 710.2 - 742.9**

**ENBRIDGE PIPELINES INC.
LINE 3 REPLACEMENT
PROGRAM**

10427

- Station Kilometre Post
- Reroute Station Kilometre Post
- Line 3 Replacement Pipeline Route (Route Filed November 5, 2014)
- Line 3 Replacement Pipeline Reroute
- Construction Right-of-Way
- Extra Temporary Workspace
- Access Road/Shoofly
- Enbridge Property Extension
- Existing Enbridge Station/Terminal
- 892 Highway
- Road
- Access/Resource Road
- Railway
- City/Town/Village

SCALE: 1:160,000

2,000 0 2,000 m

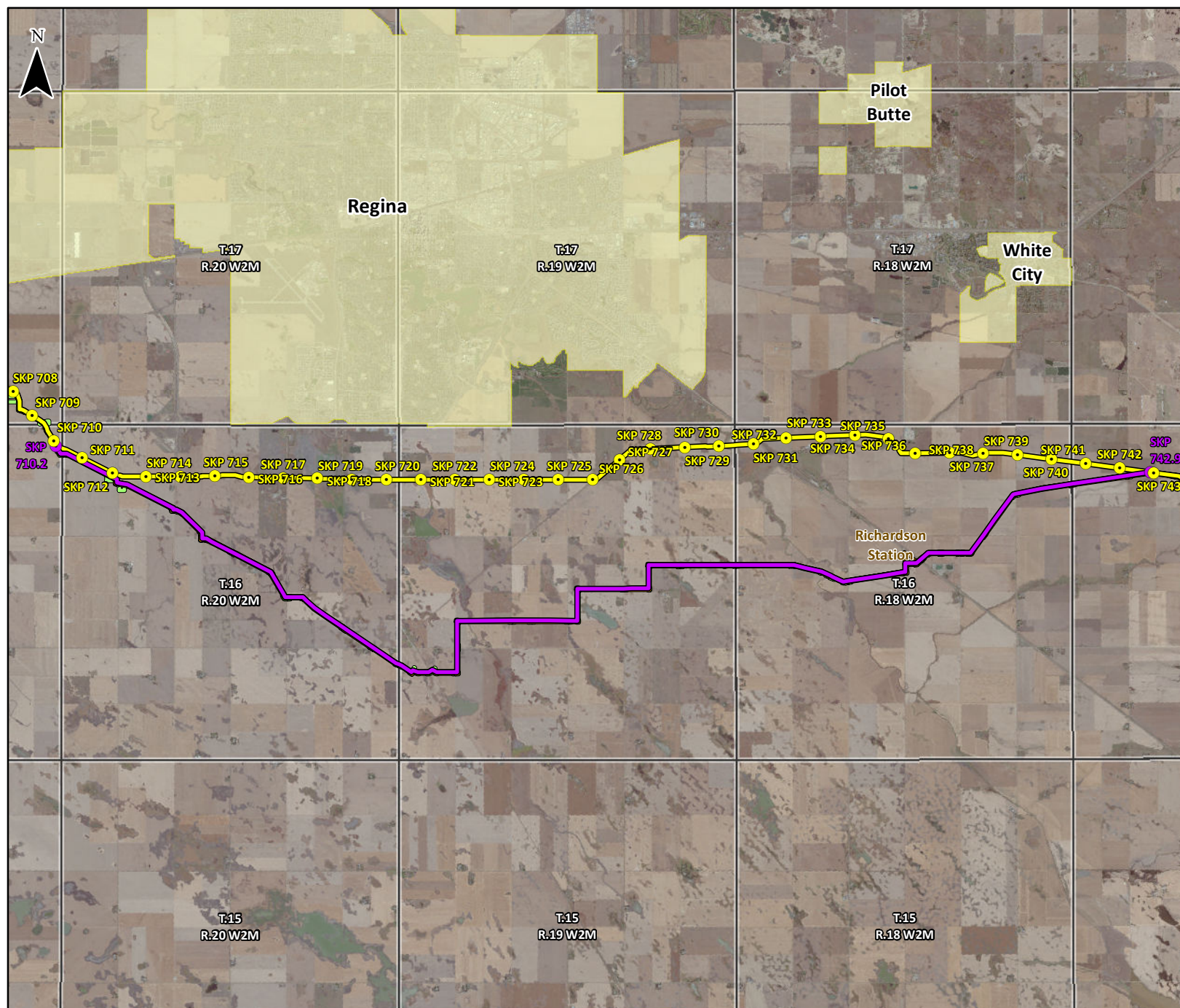
(All Locations Approximate)

tera A CH2M HILL Company

Enbridge Lambert Conformal Conic
Satellite Imagery: Enbridge Pipelines Inc. 2013; Licensed by
Pictometry 2012; Roads: SHS Inc. 2015; Railway: NRCan 2012.

Although there is no reason to believe that there are any errors associated with the data used to generate this product or in the product itself, users of these data are advised that errors in the data may be present.

Mapped By: WL Checked By: CN





April 2015

FIGURE A1-27

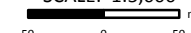
**REROUTE AT
SKP 782.7 - 782.8**

**ENBRIDGE PIPELINES INC.
LINE 3 REPLACEMENT
PROGRAM**

10427

- Station Kilometre Post
- Reroute Station Kilometre Post
- Line 3 Replacement Pipeline Route (Route Filed November 5, 2014)
- Line 3 Replacement Pipeline Reroute
- Construction Right-of-Way
- Extra Temporary Workspace
- Access Road/Shoofly
- Enbridge Property Extension
- Existing Enbridge Station/Terminal
- Highway
- Road
- Access/Resource Road
- Railway
- City/Town/Village

SCALE: 1:5,000



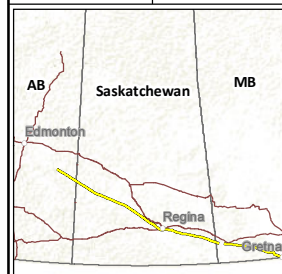
(All Locations Approximate)

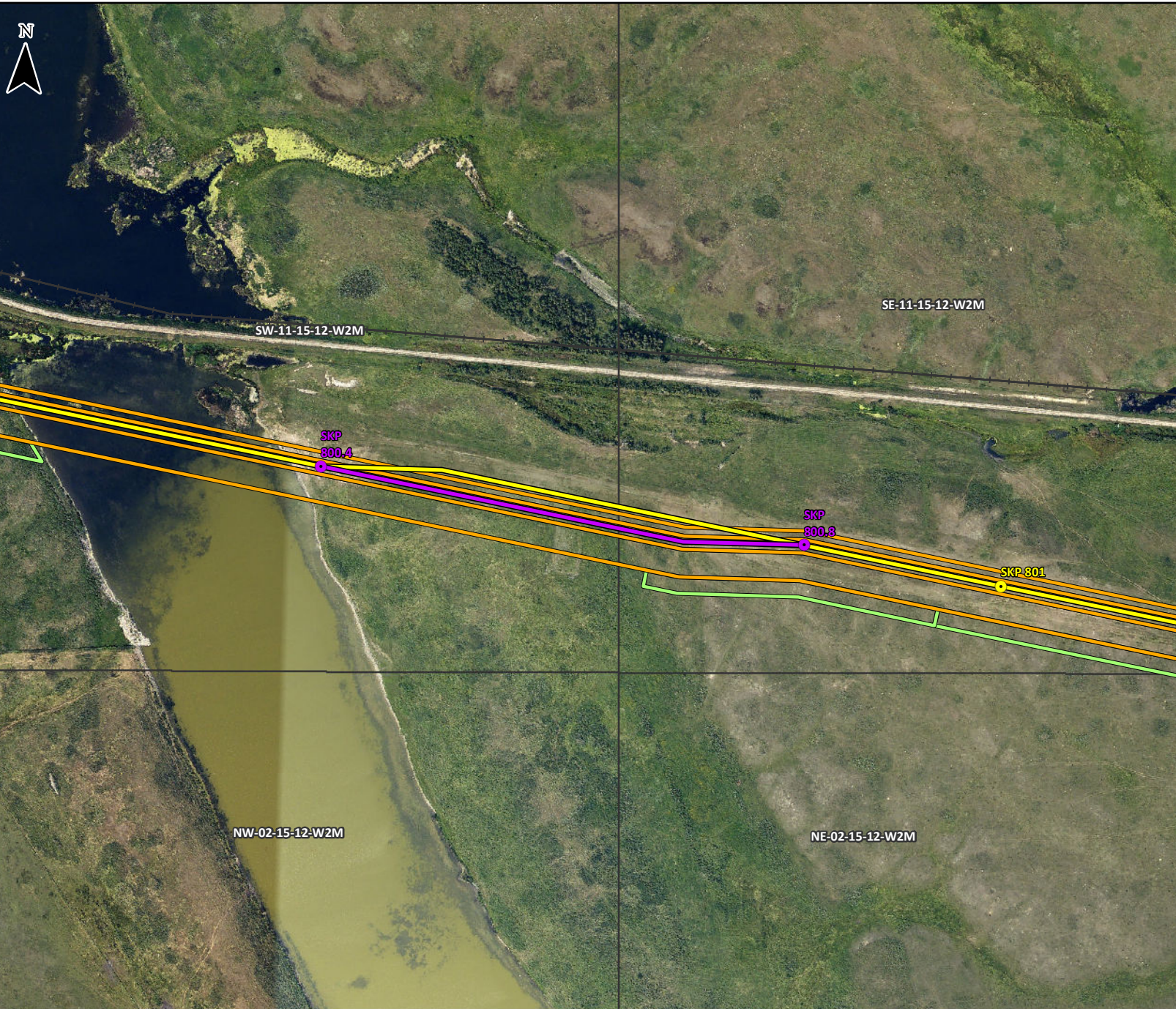
tera A CH2M HILL Company

Enbridge Lambert Conformal Conic
Satellite Imagery: Enbridge Pipelines Inc. 2013; licensed by
Pictometry 2012; Roads: SHS Inc. 2015; Railway: NRCan 2012.

Although there is no reason to believe that there are any errors associated with the data used to generate this product or in the product itself, users of these data are advised that errors in the data may be present.

Mapped By: WL Checked By: CN





April 2015

FIGURE A1-28

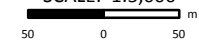
REROUTE AT SKP 800.4 - 800.8

ENBRIDGE PIPELINES INC. LINE 3 REPLACEMENT PROGRAM

10427

- Station Kilometre Post
- Reroute Station Kilometre Post
- Line 3 Replacement Pipeline Route (Route Filed November 5, 2014)
- Line 3 Replacement Pipeline Reroute
- Construction Right-of-Way
- Extra Temporary Workspace
- Access Road/Shoofly
- Enbridge Property Extension
- Existing Enbridge Station/Terminal
- Highway
- Road
- Access/Resource Road
- Railway
- City/Town/Village

SCALE: 1:5,000



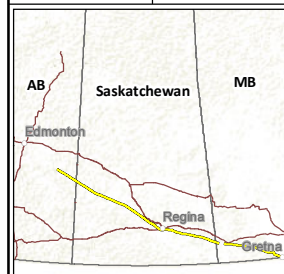
(All Locations Approximate)



Enbridge Lambert Conformal Conic
Satellite Imagery: Enbridge Pipelines Inc. 2013; licensed by
Pictometry 2012; Roads: JHS Inc. 2015; Railway: NRCan 2012.

Although there is no reason to believe that there are any errors associated with the data used to generate this product, or in the product itself, users of these data are advised that errors in the data may be present.

Mapped By: WL Checked By: CN





April 2015

FIGURE A1-29

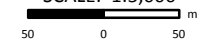
**REROUTE AT
SKP 808.0 - 808.1**

**ENBRIDGE PIPELINES INC.
LINE 3 REPLACEMENT
PROGRAM**

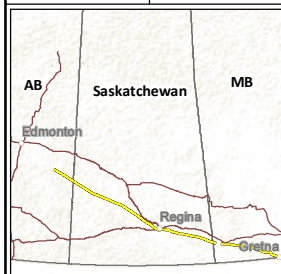
10427

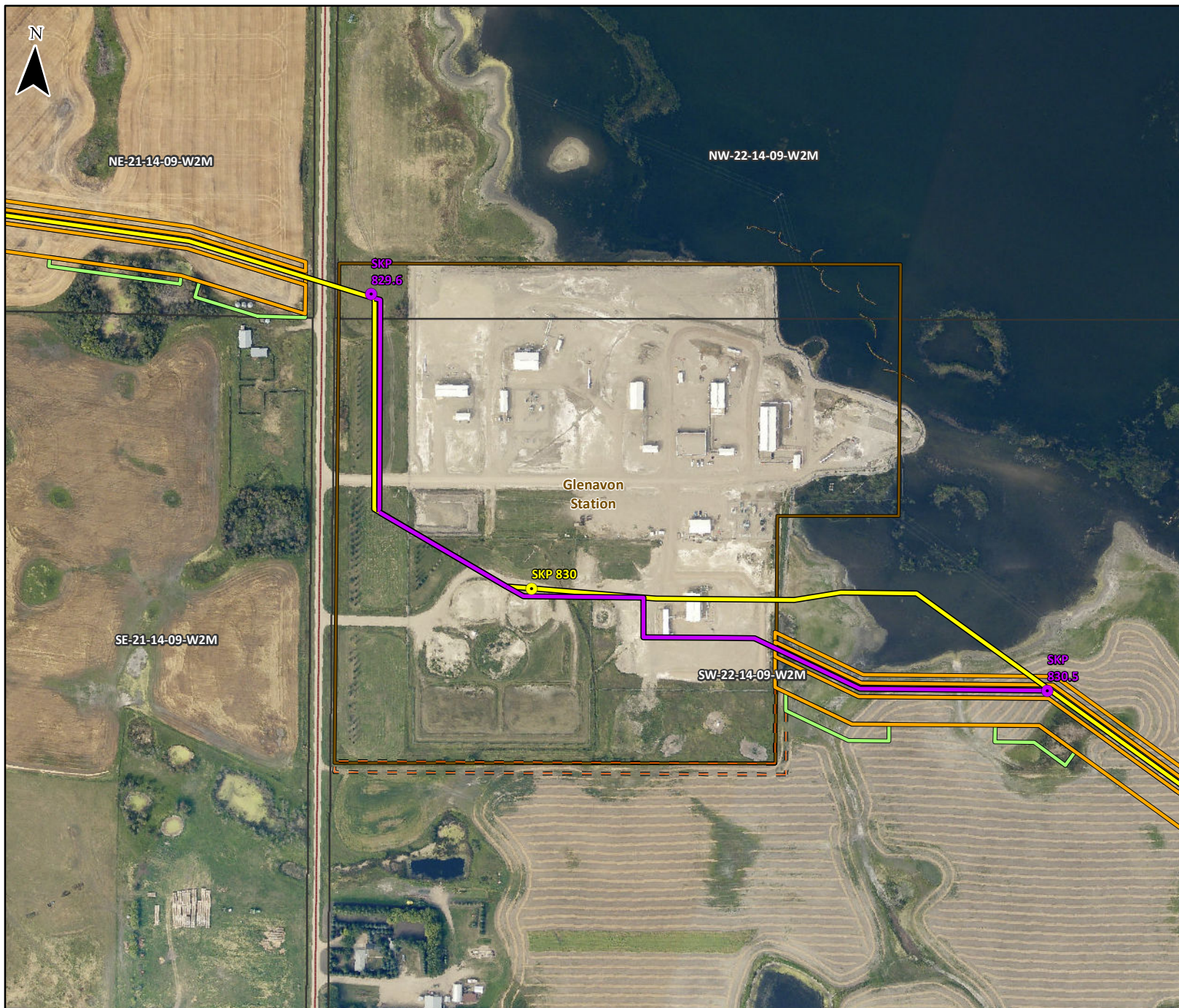
- Station Kilometre Post
- Reroute Station Kilometre Post
- Line 3 Replacement Pipeline Route (Route Filed November 5, 2014)
- Line 3 Replacement Pipeline Reroute
- Construction Right-of-Way
- Extra Temporary Workspace
- Access Road/Shoofly
- Enbridge Property Extension
- Existing Enbridge Station/Terminal
- 892 Highway
- Road
- Access/Resource Road
- Railway
- City/Town/Village

SCALE: 1:5,000



(All Locations Approximate)





April 2015

FIGURE A1-30

**REROUTE AT
SKP 829.6 - 830.5**

**ENBRIDGE PIPELINES INC.
LINE 3 REPLACEMENT
PROGRAM**

10427

- Station Kilometre Post
- Reroute Station Kilometre Post
- Line 3 Replacement Pipeline Route (Route Filed November 5, 2014)
- Line 3 Replacement Pipeline Reroute
- Construction Right-of-Way
- Extra Temporary Workspace
- Access Road/Shoofly
- Enbridge Property Extension
- Existing Enbridge Station/Terminal
- Highway
- Road
- Access/Resource Road
- Railway
- City/Town/Village

SCALE: 1:5,000

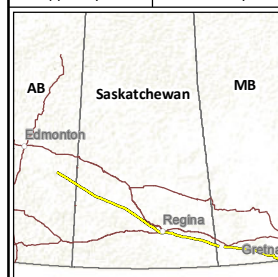
50 0 50 m
(All Locations Approximate)

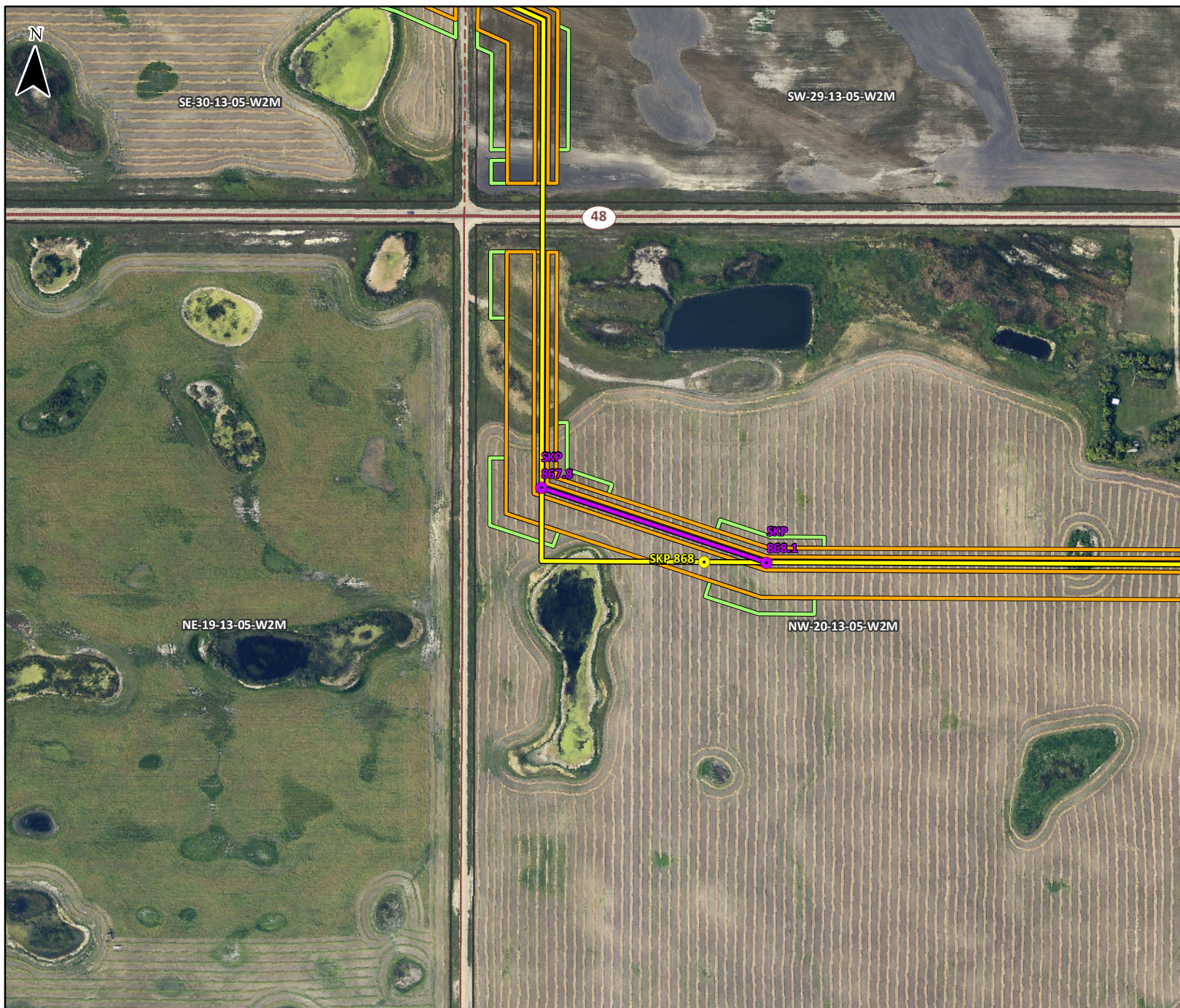


Enbridge Lambert Conformal Conic
Satellite Imagery: Enbridge Pipelines Inc. 2013; licensed by
Pictometry 2012; Roads: SHS Inc. 2015; Railway: NRCan 2012.

Although there is no reason to believe that there are any errors associated with the data used to generate this product or in the product itself, users of these data are advised that errors in the data may be present.

Mapped By: WL Checked By: CN





April 2015

FIGURE A1-31

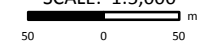
**REROUTE AT
SKP 867.8 - 868.1**

**ENBRIDGE PIPELINES INC.
LINE 3 REPLACEMENT
PROGRAM**

10427

- Station Kilometre Post
- Reroute Station Kilometre Post
- Line 3 Replacement Pipeline Route (Route Filed November 5, 2014)
- Line 3 Replacement Pipeline Reroute
- Construction Right-of-Way
- Extra Temporary Workspace
- Access Road/Shoofly
- Enbridge Property Extension
- Existing Enbridge Station/Terminal
- Highway
- Road
- Access/Resource Road
- Railway
- City/Town/Village

SCALE: 1:5,000



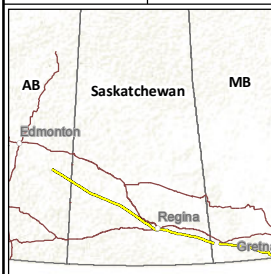
(All Locations Approximate)



Enbridge Lambert Conformal Conic
Satellite Imagery: Enbridge Pipelines Inc. 2013; licensed by
Pictometry 2012; Roads: JHS Inc. 2015; Railway: NRCan 2012.

Although there is no reason to believe that there are any errors associated with the data used to generate this product or in the product itself, users of these data are advised that errors in the data may be present.

Mapped By: WL Checked By: CN





April 2015

FIGURE A1-32

**REROUTE AT
SKP 869.2 - 869.3**

ENBRIDGE PIPELINES INC. LINE 3 REPLACEMENT PROGRAM

10427

- Station Kilometre Post
- Reroute Station Kilometre Post
- Line 3 Replacement Pipeline Route (Route Filed November 5, 2014)
- Line 3 Replacement Pipeline Reroute
- Construction Right-of-Way
- Extra Temporary Workspace
- Access Road/Shoofly
- Enbridge Property Extension
- Existing Enbridge Station/Terminal
- 892 Highway
- Road
- Access/Resource Road
- Railway
- City/Town/Village

SCALE: 1:5,000

50 0 50 m

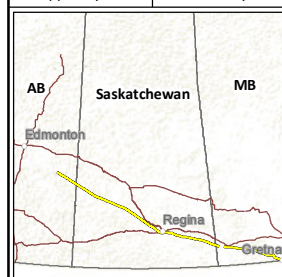
(All Locations Approximate)

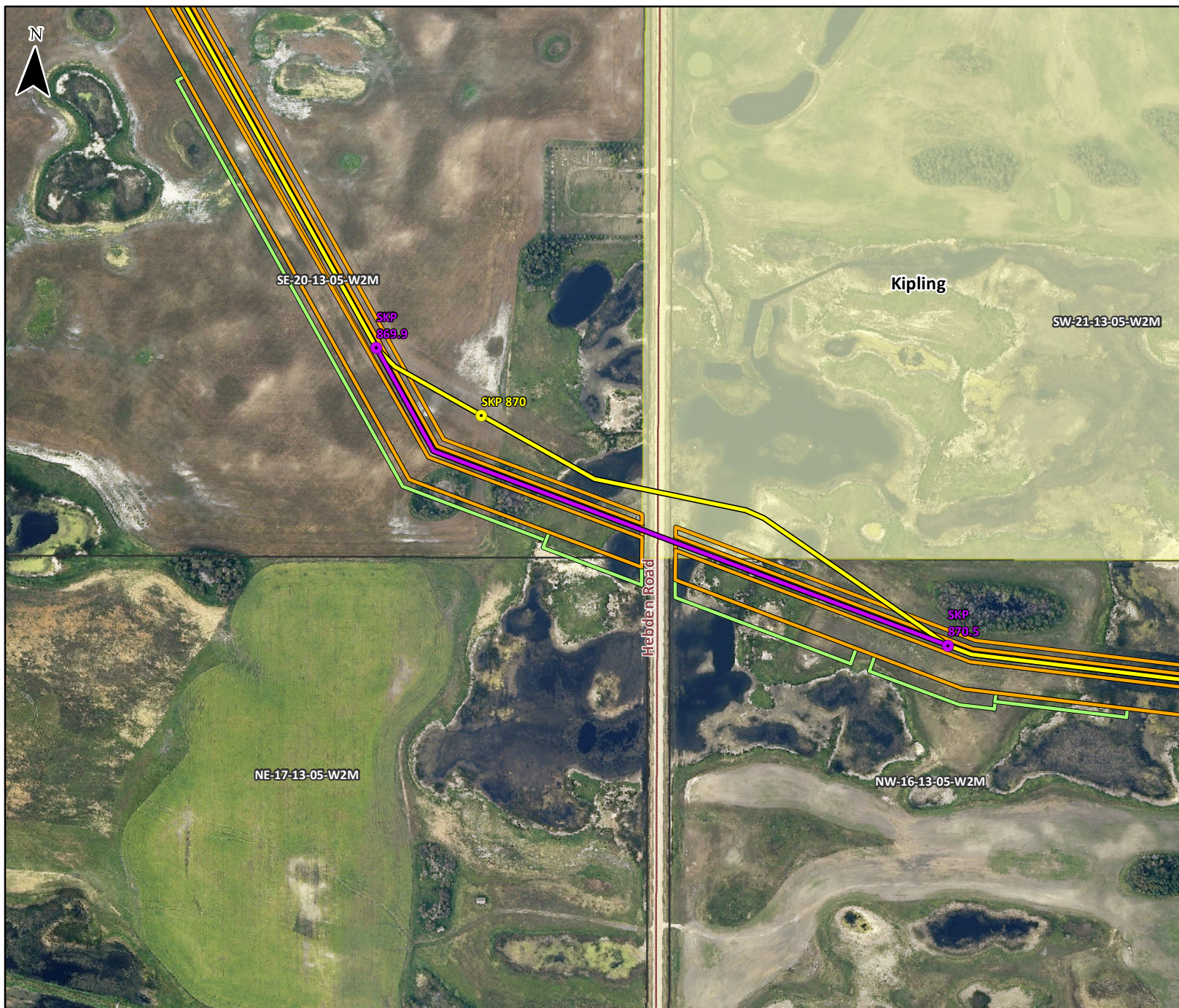


Enbridge Lambert Conformal Conic
Satellite Imagery: Enbridge Pipelines Inc. 2013; licensed by
Pictometry 2012; Roads: JHS Inc. 2015; Railway: NRCan 2012.

Although there is no reason to believe that there are any errors associated with the data used to generate this product or in the product itself, users of these data are advised that errors in the data may be present.

Mapped By: WL Checked By: CN





April 2015

FIGURE A1-33

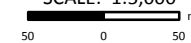
**REROUTE AT
SKP 869.9 - 870.5**

ENBRIDGE PIPELINES INC. LINE 3 REPLACEMENT PROGRAM

10427

- Station Kilometre Post
- Reroute Station Kilometre Post
- Line 3 Replacement Pipeline Route (Route Filed November 5, 2014)
- Line 3 Replacement Pipeline Reroute
- Construction Right-of-Way
- Extra Temporary Workspace
- Access Road/Shoofly
- Enbridge Property Extension
- Existing Enbridge Station/Terminal
- Highway
- Road
- Access/Resource Road
- Railway
- City/Town/Village

SCALE: 1:5,000



(All Locations Approximate)



Enbridge Lambert Conformal Conic
Satellite Imagery: Enbridge Pipelines Inc. 2013; licensed by
Pictometry 2012; Roads: JHS Inc. 2015; Railway: NRCan 2012.

Although there is no reason to believe that there are any errors associated with the data used to generate this product or in the product itself, users of these data are advised that errors in the data may be present.

Mapped By: WL Checked By: CN

